

Apollo^{AERUS} 2000



Portable Oscillating Space Heater
with Digital Remote Control

READ AND KEEP THIS MANUAL FOR REFERENCE PURPOSES
CONSERVEZ CE MANUEL POUR VOUS Y RÉFÉRER


RoHS
COMPLIANT

INTRODUCTION

Apollo 2000 is a portable space heater with style! Its sleek design uses all new materials for faster heating and greater efficiency, protecting against overheating or if the unit is tipped off balance. Apollo 2000 senses the temperature in its environment and adjusts itself accordingly, working faster or slower to achieve the programmed desired temperature. A large digital touch screen control panel displays the temperature while providing various heating mode options and oscillating controls. A remote control with the same functions as the display panel is included! Just turn it on, set the temperature and Apollo 2000 does the rest!

If you have any questions concerning this product, contact Customer Service by calling toll free 1-888-764-0693 or via email at support@aerusonline.com.



WARNING!

RISK OF FIRE

Keep combustible material such as furniture, papers, clothes, and curtains at least 3 feet (0.9m) from all sides of the heater.



MISE EN GARDE!

RISQUE D'INCENDIE

Les matériaux combustibles, tels que les meubles, le papier, les vêtements et les rideaux, doivent être tenus à l'écart de tous les côtés du radiateur, à une distance minimale de 3 pieds (0,9 m).

CONTENTS

Introduction	2
Specifications	2
Product Features	3
Important Safeguards	4
Operation	5
Maintenance	6
Warranty	7

Please read and follow all safety precautions and operation procedures outlined in this manual. Use only genuine replacement parts.

SPECIFICATIONS

Mechanical:

- PTC Heating Fan Motor

Electrical: 120 VAC / 60 Hz

Temperature Display:

- Fahrenheit or Celsius

Temperature Setting Range:

- 57°F - 97°F (15°C - 35°C)

***Coverage:** Up to 1500 ft² (140 m²)

Dimensions:

- Height 22 5/16" (56.7 cm)
- Width 8 5/8" (21.9 cm)
- Depth 6 1/2" (16.5 cm)

Oscillation: 50° radius

Safety Tip-Over Switch: Yes

Warranty: Limited 1 Year

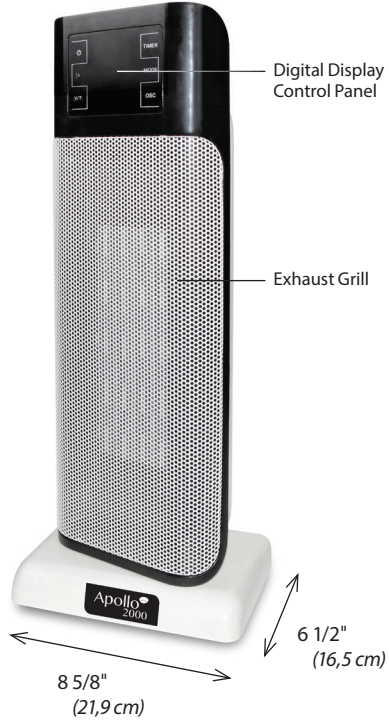
* The coverage area will vary depending upon on variables such as your insulation, type and number of windows, number of stories, construction type, outside temperature, etc.

* La superficie de la zone de couverture dépend de plusieurs facteurs : type de produit isolant utilisé, type et nombre de fenêtres, nombre d'étages, type de construction, température extérieure, etc.

PRODUCT FEATURES

- Large LCD Display
- Touch Screen Digital Control Panel
- Beep Tones and Indicator Lights
- Remote Control
- Precise Temperature Sensor
- Self-Adjusting Motor
- Safety Tip-Over Switch
- Auto Shut-Off Function
- Timer for Sleep Mode
- Optional Oscillation
- Low Maintenance
- Portable and Lightweight
- Separate Safety Main Power Switch
- Easy-Grab Carrying Handle

22 5/16"
(56,7 cm)



Main Power Switch

Easy-Grab Carrying Handle

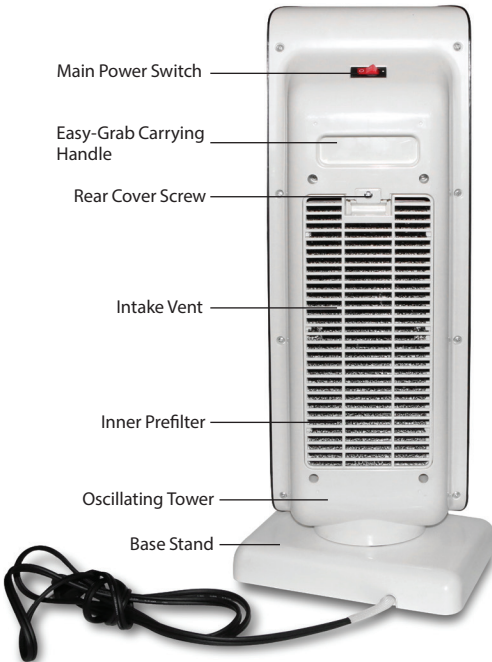
Rear Cover Screw

Intake Vent

Inner Prefilter

Oscillating Tower

Base Stand



Side View





WARNING – WHEN USING AN ELECTRICAL APPLIANCE, BASIC PRECAUTIONS SHOULD ALWAYS BE TAKEN.

L'utilisation d'appareils électriques nécessite des précautions de base qu'il faut toujours prendre.

TO REDUCE THE RISK OF FIRE, ELECTRICAL SHOCK, OR INJURY:

Pour réduire les risques d'incendie, de décharge électrique ou de blessure :

- **Use only as described in this manual.** *N'utiliser l'appareil que de la façon prescrite dans ce livret.*
- **Do not attempt to repair or adjust any of the electrical or mechanical functions of the unit. Contact Customer Service for service information.** *Ne pas tenter de réparer ou de régler un composant électrique ou mécanique. Communiquer avec le Service à la clientèle afin d'obtenir des renseignements au sujet de l'entretien de l'appareil.*
- **Avoid prolonged contact with the exhaust vent metal surface.** *Éviter tout contact prolongé avec la surface métallique de l'orifice d'évacuation.*
- **To avoid the risk of fire, do not block or cover the heater.** *Pour éviter tout risque d'incendie, ne pas bloquer ou couvrir le radiateur.*
- **Ensure at all times that the heater is placed solidly on its base.** *S'assurer que le radiateur est solidement posé sur sa base en tout temps.*
- **Do not use outdoors or on wet surfaces.** *Ne pas utiliser l'appareil à l'extérieur ou sur des surfaces mouillées.*
- **Do not allow to be used as a toy. Close attention is necessary when operated by or near children.** *L'appareil n'est pas un jouet. Une surveillance étroite s'impose lorsque l'appareil est utilisé par des enfants ou à proximité de ceux-ci.*
- **Do not pull or carry by the cord, use cord as a handle, close a door on the cord, or pull the cord around sharp edges or corners.** *Ne pas tirer ni transporter l'appareil par le cordon d'alimentation ou se servir du cordon comme d'une poignée. Ne pas fermer de porte sur le cordon ou tirer sur celui-ci le long de coins ou d'arêtes vives. Tenir le cordon à l'écart des surfaces chaudes.*
- **Do not unplug by pulling on the cord. To unplug, grasp the plug, not the cord.** *Pour débrancher l'appareil, tirer sur la fiche et non sur le cordon d'alimentation.*
- **Do not handle plug or appliance with wet hands.** *Ne pas manipuler l'appareil ou la fiche avec les mains mouillées.*
- **Do not allow foreign objects to enter the ventilation or exhaust openings.** *Ne rien introduire dans les orifices de ventilation ou de sortie d'air.*
- **Keep hair, loose clothing, fingers, and all parts of body away from openings and moving parts.** *Tenir les orifices et les pièces mobiles loin des cheveux, des vêtements, des doigts et autres parties du corps.*
- **Turn off all controls before unplugging.** *Tout arrêter avant de débrancher l'appareil.*
- **The appliance should not be used near the presence of explosives or other flammable substances.** *L'appareil ne doit pas être utilisé près de réservoir d'oxygène ou d'autres gaz inflammables.*

OPERATION

Apollo 2000 is easy to operate. Simply plug the power cord into a standard electrical 120VAC outlet and turn the unit on. Program the desired temperature and settings with the supplied remote control or by touching the digital display control panel.

• UNIT PLACEMENT

Apollo 2000 should only be operated at minimum distance of 2 feet (61cm) from any wall or other object. Position the air flow in order to optimize the heating of the room. Avoid corners, small spaces, floors and ceilings.

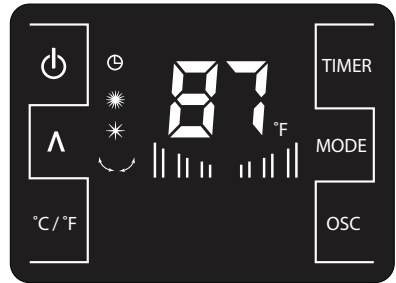
• MAIN POWER SWITCH

A red main power switch on the top of the unit has two positions, ON and OFF. A beep will sound when switching the power to ON. The display will read "00" or double zeros. **NOTE:** *Whenever heating has stopped, disconnect the power supply after at least 30 seconds to prolong the life of the unit.*



• HEAT CONTROL PANEL POWER BUTTON

The Heat Control Panel may be accessed by pressing its ON/OFF button located in the top left corner of the display. Turning the heat on will sound another beep and a corresponding indicator light should show on the display. This turns the heater on and allows access to the other settings on the control panel. Pressing the Heat Control Panel ON/OFF button again will turn the heater off, however the fan will remain on until cooled down and then will shut off automatically.



• SETTING THE TEMPERATURE



°C / °F

While the heater is **ON**, press the temperature "Λ" button as many times as needed to progressively increase the value on the display to the desired temperature. When the desired temperature shows on the display, stop and wait. After 5 seconds the temperature setting will be programmed. **NOTE:** *A button on the control panel switches the temperature between Celsius and Fahrenheit values. The default temperature setting is 77°F (25°C). **The temperature settings range from 57°F to 97°F (15°C to 35°C).** The temperature range will loop when programming if the button is pushed enough times. If you pass the temperature you wanted, keep pressing the button until it starts over at the lowest value and can be increased again.*

• HIGH / LOW POWER

MODE

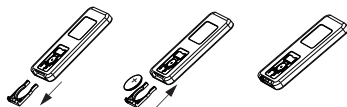
While the heater is **ON**, the mode may be set to run on low (<1000W). A corresponding indicator light will show on the display. To increase the power to high, press the mode button again and a second corresponding indicator light will show above the other. You should notice the heat increase. Press the mode button again to turn off the heat. The indicator lights will turn off and cool air will flow from the unit.



OPERATION CONTINUED...

• REMOTE CONTROL USAGE

A remote control provides the same settings as the display panel. Pull the clear plastic sleeve from the bottom of the remote to activate the battery.



TIMER • SETTING THE TIMER



The timer may be programmed anytime after starting up and can be set in one hour increments. The timer ranges between 1 hour up to 9 hours. Select the appropriate auto shut-off time by pressing the timer button until the preferred number is reached. After 5 seconds the timer will be programmed and the unit will begin counting down. When the timer reaches 0, the indicator lights will turn off and the heater will automatically shut down.

OSC • OPTIONAL OSCILLATOR



Press the Oscillate "OSC" button on the control panel to allow the heater to rotate the direction it faces. Corresponding indicator lights appear on the screen showing that the unit is rotating from side to side. Press the button again to stop the heater from rotating further. The indicator light will turn off.

• PRECISE DIGITAL TEMPERATURE SENSOR

Apollo 2000 features an advanced digital temperature sensor to precisely control the temperature in the room. When the indoor ambient temperature is approximately 1° higher than the set temperature, the heater will automatically adjust its power mode to accommodate for the higher temperature. When the indoor ambient temperature is approximately 2° higher than the set temperature, the heater will stop heating altogether. When the indoor ambient temperature is approximately 2° lower than the set temperature, the heater will automatically adjust from low to high setting.

• AUTO RESET

Apollo 2000 also features an automatic temperature reset control. If for any reason, the heater begins to overheat, the automatic reset control will immediately suspend the heating element to prevent further overheating. In the event the heater stops working properly, please contact customer service. Shut down all controls and disconnect power supply. Be sure to unplug the unit from any electrical outlets. **NOTE:** Any programmed settings must be reset after a normal shut down or accidental loss of power.

MAINTENANCE

Disconnect all power supply before servicing. It is recommended that you wash and dry the foam prefilter on a monthly basis. To access the prefilter, remove the rear cover by removing a single screw at the top with a Philips head screwdriver. Only reinstall when the prefilter is completely dry. To remove any dust buildup, wipe the housing with a soft, clean, lightly damp (water only) cloth as needed. Do not allow direct contact with water. Avoid using harsh cleaning chemicals which can damage or discolor the unit. When not in use, it is recommended to store the unit in its original box in a clean, dry place. Be sure not to fold or bend the power cord to avoid damages to the electrical wiring or plug while in storage.

WARRANTY INFORMATION

LIMITED 1 YEAR WARRANTY

For warranty service, please contact your sales representative for the address of the nearest service center or contact Customer Service by calling toll free 1-888-764-0693 or via email at support@aerusonline.com.

WHAT IS COVERED BY THIS WARRANTY

We warrant the Apollo 2000, subject to the conditions herein, against defects in workmanship and material, for a period of one (1) year from the date of Customer's original retail purchase. In addition, we warrant the heating element of the Apollo 2000, against defects in workmanship or material, for a period of ten (10) years from the date of Customer's original retail purchase of the Apollo 2000.

INSTALLATION AND MAINTENANCE REQUIREMENTS

This warranty is expressly conditioned upon proper installation, operation, cleaning and maintenance, all in accordance with the Owner's Manual. Failure to meet any of these requirements will void this warranty. Servicing of your Apollo 2000 by parties other than our authorized representatives and/or using parts other than genuine parts will also void this warranty.

HOW TO OBTAIN WARRANTY SERVICE

Customer must contact Customer Service and provide proof of purchase within the above time periods. We will repair or replace and return the product, without charge and within a reasonable period of time, subject to the conditions herein, if its examination shall disclose any part to be defective in workmanship or material. If we, in our discretion, are unable to repair the product after a reasonable number of attempts, we will provide either a refund of the purchase price or a replacement unit, at the company's option. We reserve the right to inspect and/or require confirmation of installation method.

WHAT IS NOT COVERED BY THIS WARRANTY

Ordinary wear and tear shall not be considered a defect in workmanship or material. These warranties do not apply for loss or damage caused by accident, fire, abuse, misuse, improper installation, leaking, modification, misapplication, or by any repairs other than those provided by our authorized Service Center. This warranty is non-transferable.

MISSING SERIAL NUMBERS AND UNAUTHORIZED CHANNELS

If a valid serial number is missing from the product, the warranty will be voided. Warranties are voided if a product is purchased through unauthorized channels; this includes websites that are not authorized to use our trademarked names, images and logos as well as Internet auction sites (e.g. eBay and craigslist). To confirm warranty coverage prior to purchasing a product, contact Customer Service with the product serial number located on the back of the unit.

EXCLUSION OF OTHER WARRANTIES AND CONDITIONS

EXCEPT AS PROVIDED HEREIN, WE MAKE NO REPRESENTATION OR WARRANTY OF ANY KIND. ALL OTHER WARRANTIES OF ANY KIND, EXPRESS OR IMPLIED, ARE HEREBY EXPRESSLY DISCLAIMED, INCLUDING ANY IMPLIED WARRANTY OF MERCHANTABILITY OR FITNESS FOR A PARTICULAR PURPOSE.

LIMITATION OF LIABILITY FOR SPECIAL, INCIDENTAL, OR CONSEQUENTIAL DAMAGES

WE SHALL NOT IN ANY CASE BE LIABLE FOR SPECIAL, INCIDENTAL OR CONSEQUENTIAL DAMAGES ARISING FROM BREACH OF EXPRESSED OR IMPLIED WARRANTIES, CONDITIONS, GUARANTEES OR REPRESENTATIONS, BREACH OF CONTRACT, NEGLIGENCE OR ANY OTHER LEGAL THEORY. Such excluded damages include, but are not limited to, loss of profits or revenue, and loss of the use of the products, and any loss caused by leaks or other water damage.

FOR U.S. APPLICATION ONLY

This warranty gives you specific legal rights, and you may also have other rights which vary from state to state. Some states do not allow limitations on warranties, or on remedies for breach. In such states, the above limitations may not apply to you.

FOR CANADIAN APPLICATION ONLY

Exclusion of Subsequent Owners: Except as otherwise required by applicable legislation, this warranty is not transferable.

This warranty gives you specific legal rights and you may also have other rights which vary from province to province. Some provinces and territories do not allow limitations on warranties, or on remedies for breach. In such provinces or territories, the above limitations may not apply to you. If any provision of this warranty or part thereof is held by a court of competent jurisdiction to be invalid, illegal, or unenforceable, the validity, legality and enforceability of the remaining provisions or parts thereof will not in any way be affected or impaired within the jurisdiction of that court. This entire warranty shall continue to be valid, legal and enforceable in any jurisdiction where a similar determination has not been made.

This warranty is provided by:

Aerus, LLC

300 East Valley Drive

Bristol, VA 24201

SERVICE

Every effort is made to ensure customers receive an up-to-date instructions manual on the use of our products; however, from time to time, modifications to our products may without notice make the information contained herein subject to alteration. For the latest information, please visit our website.

This equipment has been tested and found to comply with the limits for Industrial, Scientific, and Medical Equipment (ISM), pursuant to Part 18 of the FCC Rules. These limits are designed to provide reasonable protection against harmful interference in a residential installation. This equipment generates, uses, and can radiate radio frequency energy, and if not installed and used in accordance with the instructions, may cause harmful interference to radio communications. However, there is no guarantee that interference will not occur in a particular installation. If this equipment does cause harmful interference to radio or television, which can be determined by turning the equipment off and on, the user is encouraged to try to correct the interference by one or more of the following measures:

Reorient or relocate the receiving antenna.

Increase the separation between the equipment and receiver.

Connect the equipment into an outlet on a circuit different from that to which the receiver is connected.

Consult the Distributor or an experienced radio/TV technician for help.

FCC DECLARATION OF CONFORMITY

Name: Aerus, LLC

Model: Apollo 2000 Heater (NSBK-150SK31)

Manufacturer: Aerus, LLC

This device complies with Part 18 of the FCC Rules.

RESPONSIBLE PARTY

Aerus, LLC

300 East Valley Drive
Bristol, VA 24201

Ph: 888-764-0693

Signature: 

Printed Name: Andrew Eide

Title: Vice President of Product
Development and Manufacturing

Date: 08/29/2017

www.Apollo2000Heater.com

For information regarding the use of this product please contact Customer Service.

Pour de plus amples renseignements sur l'utilisation de cet appareil, veuillez contacter notre service à la clientèle.

Email: support@aerusonline.com

Toll Free: 1-888-764-0693

Aerus LLC 300 East Valley Drive, Bristol, VA 24201
Aerus Canada, Inc. 3480 Laird Road, Suite 2-5, Mississauga, Ontario L5L 5Y4

Made in P.R.C. Fabriqu  en R publique populaire de Chine

  Aerus LLC 2017